

CS17-01P87-02-1

Rev. 1-2022
RoHS3 & REACH
IPX7 Front Face Capable*
Mobile Speakers



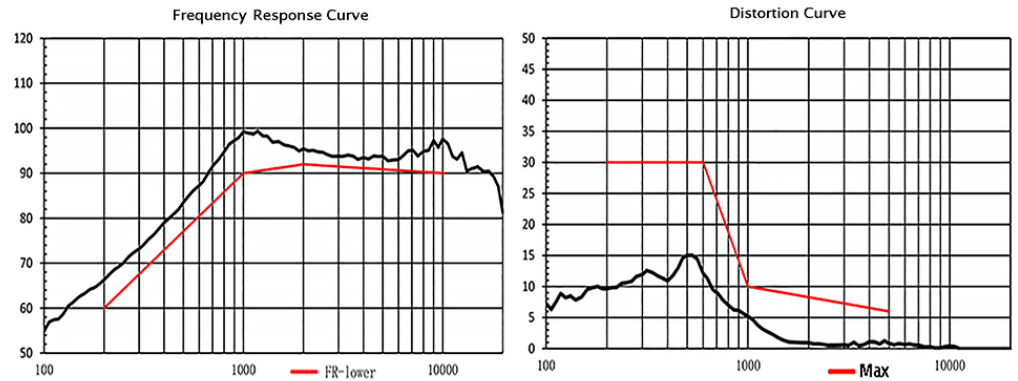
Operating Characteristics

ELECTRICAL

Rated Power	1 W
Short Term Max Power	1.5 W
Impedance	8 Ω ± 20 % 2000 Hz; 1 W

ACOUSTIC: 0.75cc Sealed Enclosure

f_o	870 Hz ± 20 % 1 W
Freq. Range	870 to 20000 Hz
Rated SPL	95 ± 3 dB 2000 Hz; 1 W; 10 cm;
Distortion	See Chart % Hz;



Physical Characteristics

MATERIALS

Housing	Plastic
Cone	TPEE
Magnet	NdFeB
Solder Pads	Tin Plated Stainless Steel

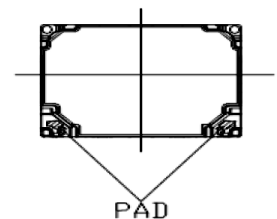
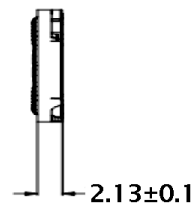
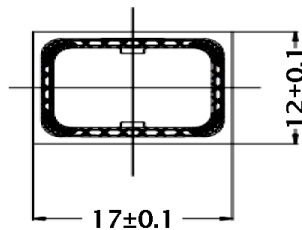
TEMPERATURE RANGES

Operating	-20 to +60 °C
Storage	-40 to +85 °C

Weight	2 g
--------	-----



Unless otherwise specified, Tolerance: ±0.15mm



All measurements are mm unless noted otherwise.

Revision	Description	By	Date
0-2021	Original Specification	CT	2021-08-03
1-2022	Added IPX7 Front Face Capable callout.	CT	2022-02-16

Warranty: For a period of one (1) year from date of shipping under normal operations conditions. This warranty does not apply to products damaged through misuse, abuse, improper installation, alteration, rework, or attempt to repair.

The information contained herein is believed to be correct, but no guarantee or warranty, express or implied, with respect to accuracy, completeness or results is extended and no liability is assumed. Challenge Electronics reserves the right to make changes in any specification, data or material contained herein.

*IP rating can be achieved through proper assembly mounting. Please contact your local Challenge Electronics sales representative for more details.

©2022 Challenge Electronics, Inc. Pub. 20220217132324