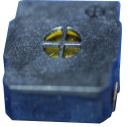


CS13-00S85-04-5

Former P/N: CES130S040BA08PPS850MR

Rev. 5-2019
RoHS3 & REACH
Surface Mount Speakers


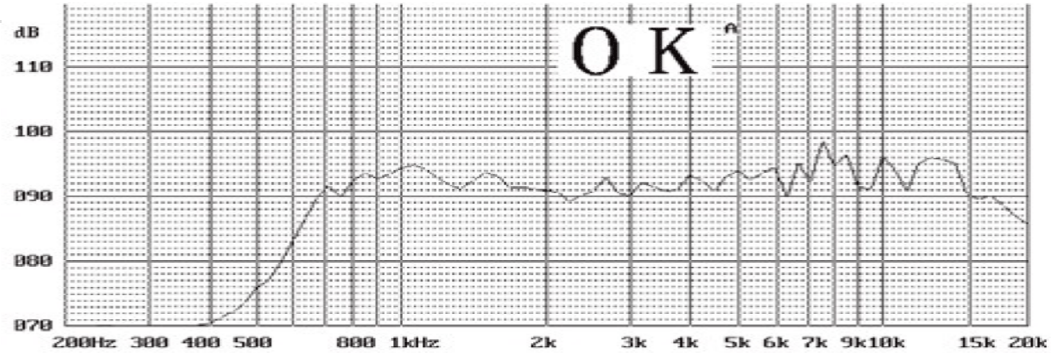
Operating Characteristics

ELECTRICAL

Rated Power	0.7 W
Short Term Max Power	1.0 W
Impedance	8 Ω \pm 15 % 2000 Hz; 0.125 W

ACOUSTIC: Baffle Board

f_o	850 Hz \pm 20 % 0.125 W
Freq. Range	680 to 20000 Hz
Rated SPL	88 \pm 3 dB 1000, 1600, 2000, 3200 Hz; AVG; 0.7 W; 10 cm
Distortion	<5 % 1000 Hz; 0.125 W



Physical Characteristics

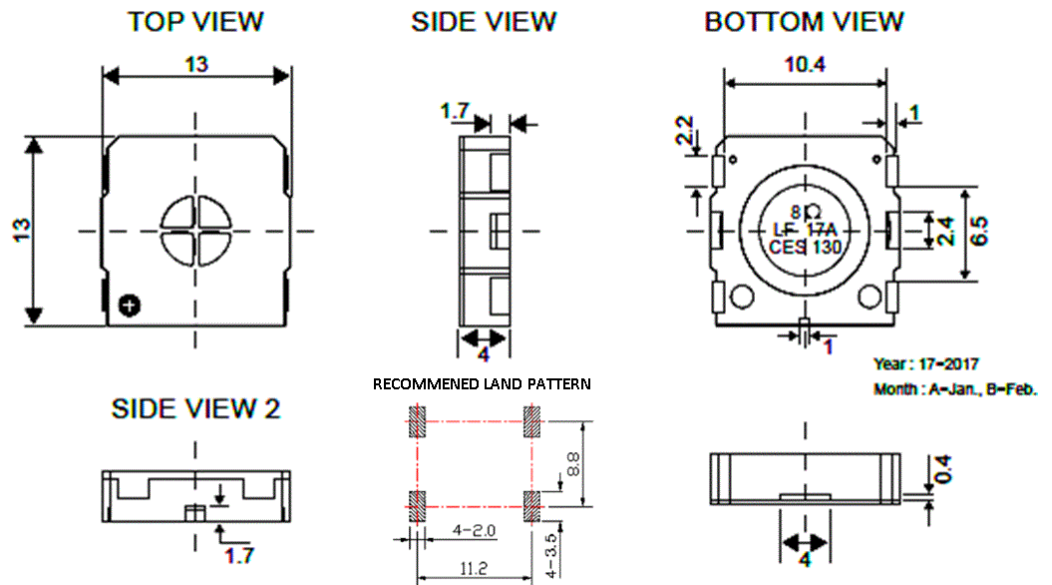
MATERIALS

Housing	Plastic
Cone	PI
Magnet	NdFeB
Solder Pad	Copper, Gold Plated

TEMPERATURE RANGES

Operating	-30 to +85 °C
Storage	-40 to +85 °C

Weight 1.1 g



All measurements in mm unless otherwise noted.

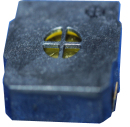
Revision	Description	By	Date
4-2018	Updated various measurement conditions (impedance, distortion, buzz + rattle)	WS	2018-05-30
5-2019	Migrate to new format	JL	2019-06-21

Warranty: For a period of one (1) year from date of shipping under normal operations conditions. This warranty does not apply to products damaged through misuse, abuse, improper installation, alteration, rework, or attempt to repair.

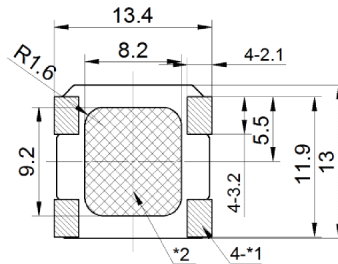
The information contained herein is believed to be correct, but no guarantee or warranty, express or implied, with respect to accuracy, completeness or results is extended and no liability is assumed. Challenge Electronics reserves the right to make changes in any specification, data or material contained herein.

CS13-00S85-04-5

Former P/N: CES130S040BA08PPS850MR

Rev. 5-2019
RoHS3 & REACH
Surface Mount Speakers


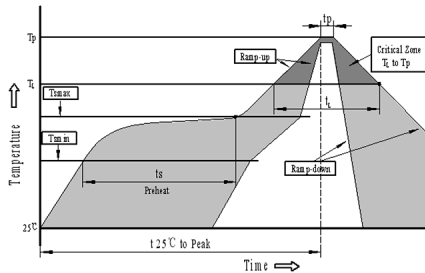
Recommended Footprint



NOTE

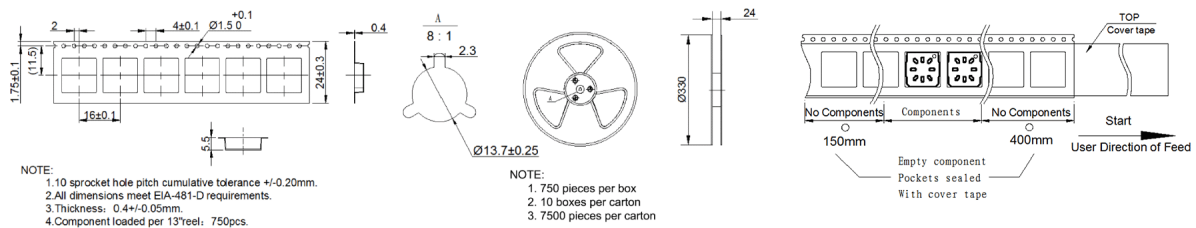
1. Land pattern*1
2. Avoid any pattern on the shade area
- *2 of PC board is highly recommended

Recommended Reflow Profile



Profile Feature	Pb-Free Assembly
Average ramp-up rate (T _L to T _p)	3°C/second max.
Preheat	
-Temperature Min. (T _{Smin})	150°C
-Temperature Min. (T _{Smax})	200°C
-Temperature Min. (t _s)	60~180 seconds
T _{Smax} to T _L	
-Ramp-up Rate	3°C/second max.
Time maintained above:	
- Temperature (T _L)	217°C
-Time (T _L)	60~150 seconds
Peak temperature (T _p)	245°C+0/-5°C
Time within 5°C of actual Peak temperature (t _p)	6 seconds max.
Ramp-down Rate	6°C/second max.
Time 25°C to Peak Temperature	8 minutes max.
We suggest the customer do the reflow soldering once.	

Tape & Reel Packaging



Revision	Description	By	Date
4-2018	Updated various measurement conditions (impedance, distortion, buzz + rattle)	WS	2018-05-30
5-2019	Migrate to new format	JL	2019-06-21

Warranty: For a period of one (1) year from date of shipping under normal operations conditions. This warranty does not apply to products damaged through misuse, abuse, improper installation, alteration, rework, or attempt to repair.

The information contained herein is believed to be correct, but no guarantee or warranty, express or implied, with respect to accuracy, completeness or results is extended and no liability is assumed. Challenge Electronics reserves the right to make changes in any specification, data or material contained herein.