

INDICATORS • SPEAKERS • SOUND TRANSDUCERS • ENCLOSURES • MICROPHONES • BATTERY ACCESSORIES

## CI36P-50E290-C-2X

Former P/N: CE-CM550AS

Rev. 5-2020  
RoHS3 & REACH  
300 HR ASTM B117 & IP65  
Piezoelectric Indicators



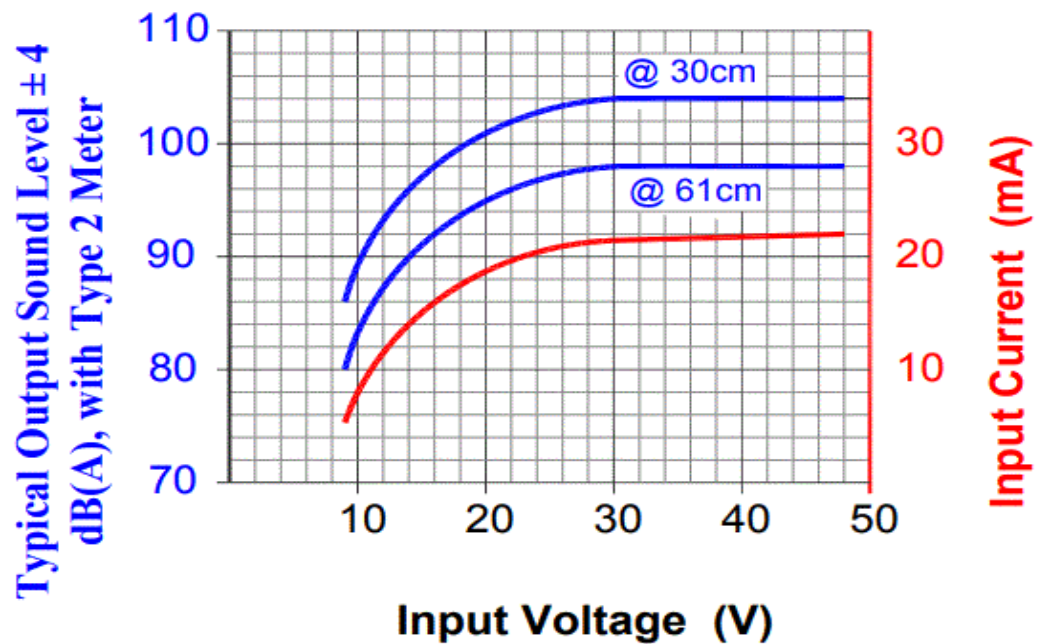
### Operating Characteristics

#### ELECTRICAL

Rated Voltage	36/48 V AC/DC
Operating Voltage	10 to 50 V AC/DC
Max Current at Vmax	25 mA

#### ACOUSTIC

Tone Category	Continuous
Description	Steady
Center $f$	2900 $\pm$ 250 Hz
Min SPL at Vmin	85 dB
Min SPL at Vmax	94 dB
Test Conditions	61 cm



### Physical Characteristics

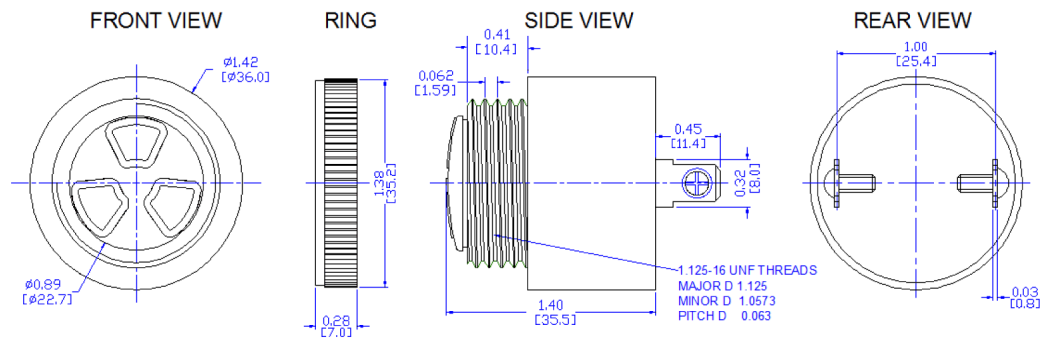
#### MATERIALS

Housing	Noryl PX9406
Diaphragm	Stainless Steel
Terminal	Electro-Tin Plated Brass

#### TEMPERATURE RANGES

Operating	-30 to +65 °C
Storage	-40 to +105 °C

Weight 37 g



Revision	Description	By	Date
4-2019	Migrate to new format	YK	2019-06-21
5-2020	Fix documentation error. Change VDC to VAC/VDC	WS	2020-06-22

Warranty: For a period of two (2) years from date of shipping under normal operations conditions This warranty does not apply to products damaged through misuse, abuse, improper installation, alteration, rework, or attempt to repair.

The information contained herein is believed to be correct, but no guarantee or warranty, express or implied, with respect to accuracy, completeness or results is extended and no liability is assumed. Challenge Electronics reserves the right to make changes in any specification, data or material contained herein.