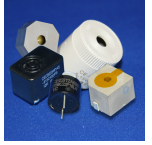


INDICATORS • SPEAKERS • SOUND TRANSDUCERS • ENCLOSURES • MICROPHONES • BATTERY ACCESSORIES

## CI36P-30E290-P-5X

Former P/N: CE-BM530ASS

Rev. 5-2019  
RoHS3 & REACH  
300 HR ASTM B117 & IP65  
Piezoelectric Indicators



### Operating Characteristics

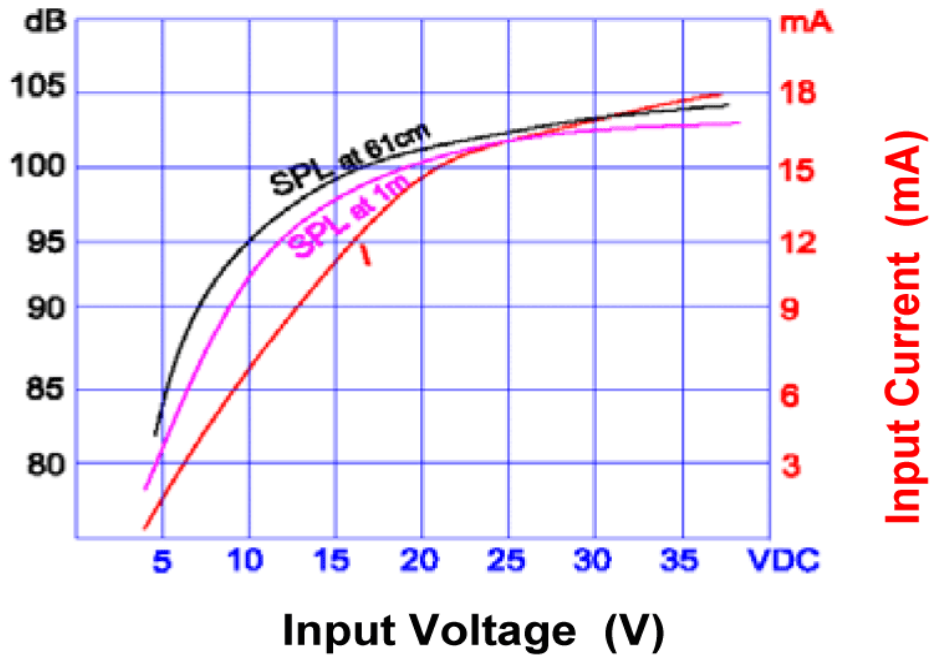
#### ELECTRICAL

Rated Voltage	24 VDC
Operating Voltage	5 to 30 VDC
Max Current at Vmax	25 mA

#### ACOUSTIC

Tone Category	Pulsating
Description	Intermittent
Center $f$	2900 $\pm$ 250 Hz
Pulse $f$	1 Hz $\pm$ 10 %
Min SPL at Vmin	80 dB
Min SPL at Vmax	95 dB
Test Conditions	61 cm

Typical Output Sound Level  $\pm$  4 dB(A), with Type 2 Meter



### Physical Characteristics

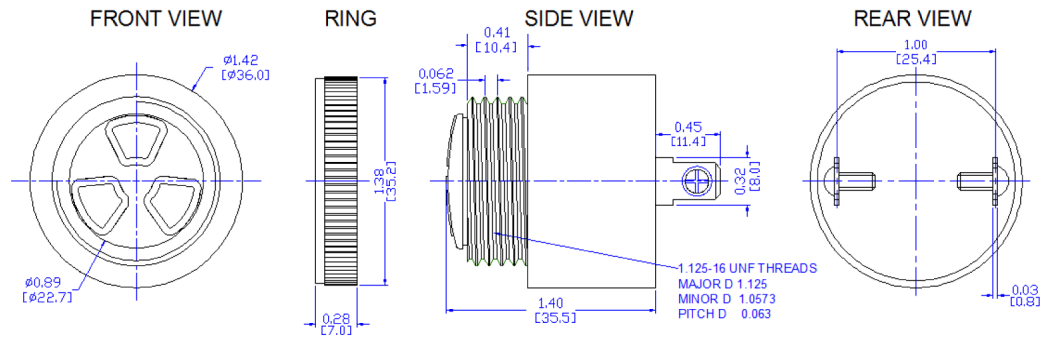
#### MATERIALS

Housing	Noryl PX9406
Diaphragm	Stainless Steel
Terminal	Electro Tin Plated Brass

#### TEMPERATURE RANGES

Operating	-30 to +65 °C
Storage	-40 to +105 °C

Weight 37 g



All Measurements are mm unless noted otherwise.

Revision	Description	By	Date
4-2018	Updated typical loudness at maximum voltage from 98 +/- 3 dB(A) to 100 $\pm$ 5 dB(A). Updated mechanical drawing with new thread dimensions.	JL	2018-04-09
5-2019	Migrate to new format		2019-06-21

Warranty: For a period of two (2) years from date of shipping under normal operations conditions This warranty does not apply to products damaged through misuse, abuse, improper installation, alteration, rework, or attempt to repair.

The information contained herein is believed to be correct, but no guarantee or warranty, express or implied, with respect to accuracy, completeness or results is extended and no liability is assumed. Challenge Electronics reserves the right to make changes in any specification, data or material contained herein.