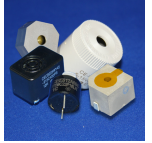


CI36P-120E290-S-5X

Former P/N: CE-WM201ASV

 Rev. 4-2019
 RoHS3 & REACH & 300 HR ASTM B117 & IP65
 Piezoelectric Indicators


Operating Characteristics

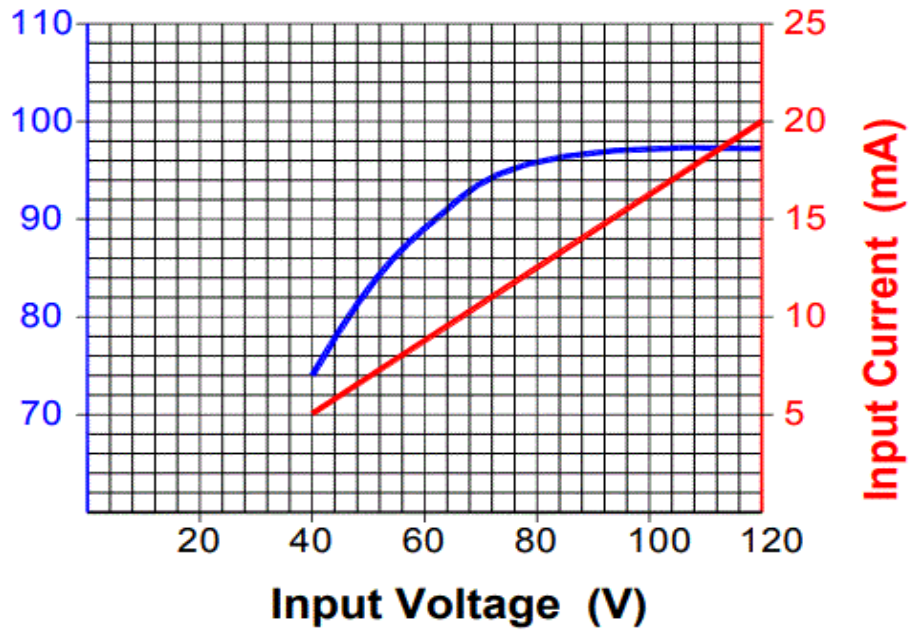
ELECTRICAL

Rated Voltage	117 VDC
Operating Voltage	40 to 120 VDC
Max Current at Vmax	20 mA

ACOUSTIC

Tone Category	Sweep
Description	Changing Frequency
Min <i>f</i>	2600 Hz ± 250 %
Max <i>f</i>	3200 Hz ± 250 %
Pulse <i>f</i>	10 Hz ± 10 %
Min SPL at Vmin	70 dB
Min SPL at Vmax	94 dB
Test Conditions	61 cm

Typical Output Sound Level ± 4
 dB(A), with Type 2 Meter



Physical Characteristics

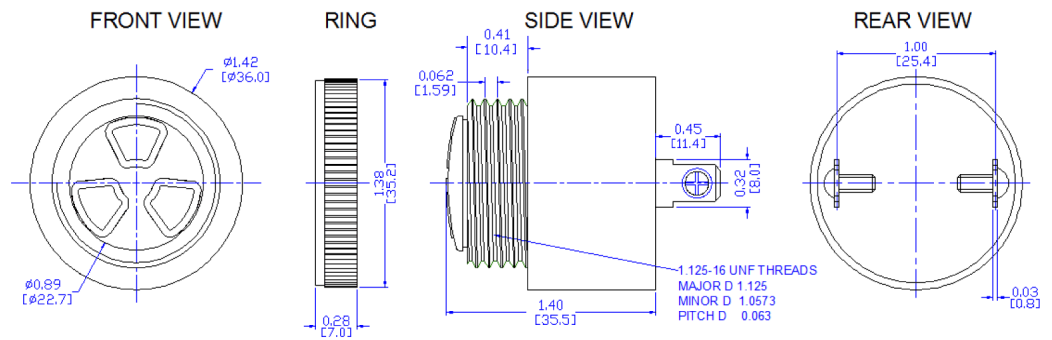
MATERIALS

Housing	Noryl PX9406
Diaphragm	Stainless Steel
Terminal	Electro-Tin Plated Brass

TEMPERATURE RANGES

Operating	-30 to +65 °C
Storage	-40 to +105 °C

Weight 37 g



Revision	Description	By	Date
4-2019	Migrate to new format	YK	2019-06-21

Warranty: For a period of two (2) years from date of shipping under normal operations conditions This warranty does not apply to products damaged through misuse, abuse, improper installation, alteration, rework, or attempt to repair.