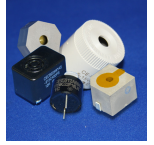


## CI36P-120E290-P-4X

Former P/N: CE-BM201ASS

Rev. 4-2019  
RoHS3 & REACH & 300 HR ASTM B117 & IP65  
Piezoelectric Indicators



### Operating Characteristics

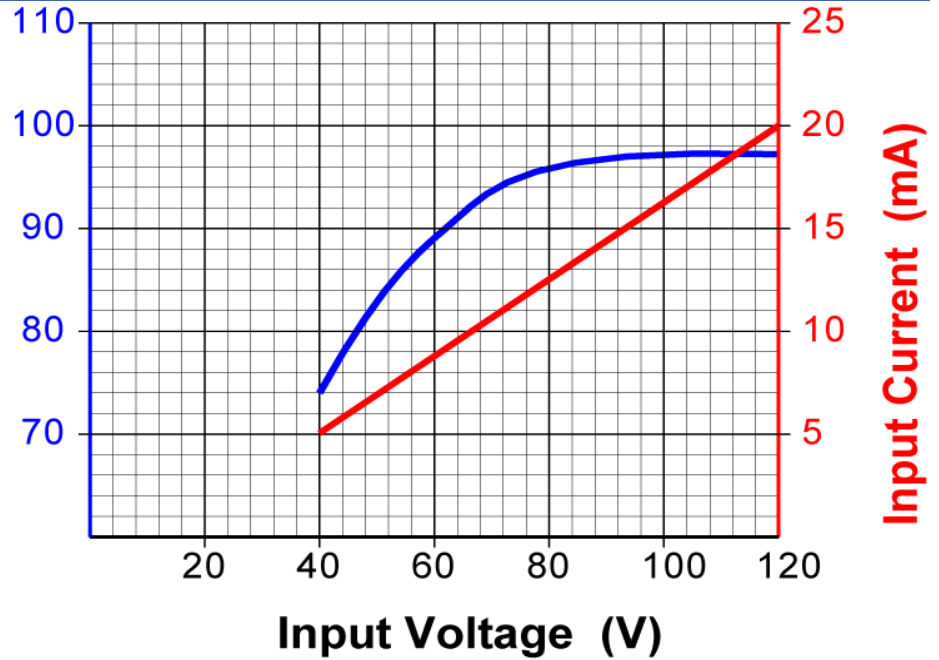
#### ELECTRICAL

Rated Voltage	117 VDC
Operating Voltage	40 to 120 VDC
Max Current at Vmax	20 mA

#### ACOUSTIC

Tone Category	Pulsating
Description	Intermittent
Center <i>f</i>	2900 ± 250 Hz
Pulse <i>f</i>	1 Hz ± 10 %
Min SPL at Vmin	70 dB
Min SPL at Vmax	94 dB
Test Conditions	61 cm

Typical Output Sound Level ± 4 dB(A), with Type 2 Meter



### Physical Characteristics

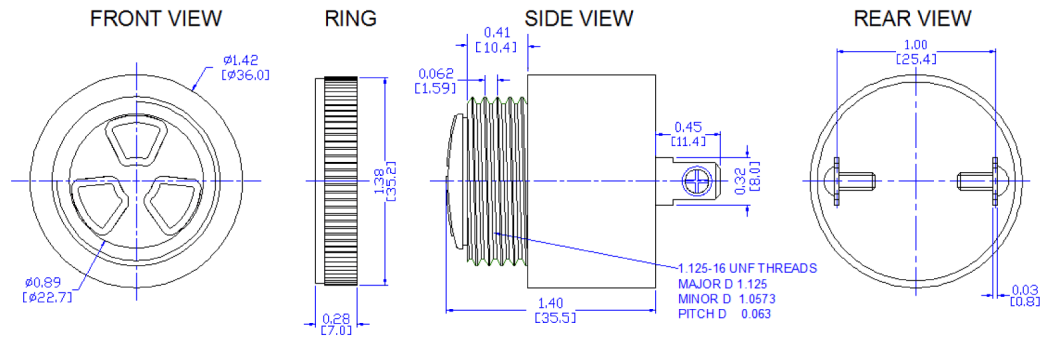
#### MATERIALS

Housing	Noryl PX9406
Diaphragm	Stainless Steel
Terminal	Electro tin plated Brass

#### TEMPERATURE RANGES

Operating	-30 to +65 °C
Storage	-40 to +105 °C

Weight 37 g



Revision	Description	By	Date
4-2019	Migrate to new format	YK	2019-06-21

Warranty: For a period of two (2) years from date of shipping under normal operations conditions This warranty does not apply to products damaged through misuse, abuse, improper installation, alteration, rework, or attempt to repair.