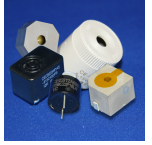


CI36P-120E290-C-2X

Former P/N: CE-CX201AQ

Rev. 8-2020
RoHS3 & REACH
300 HR ASTM B117 & IP65
Piezoelectric Indicators



Operating Characteristics

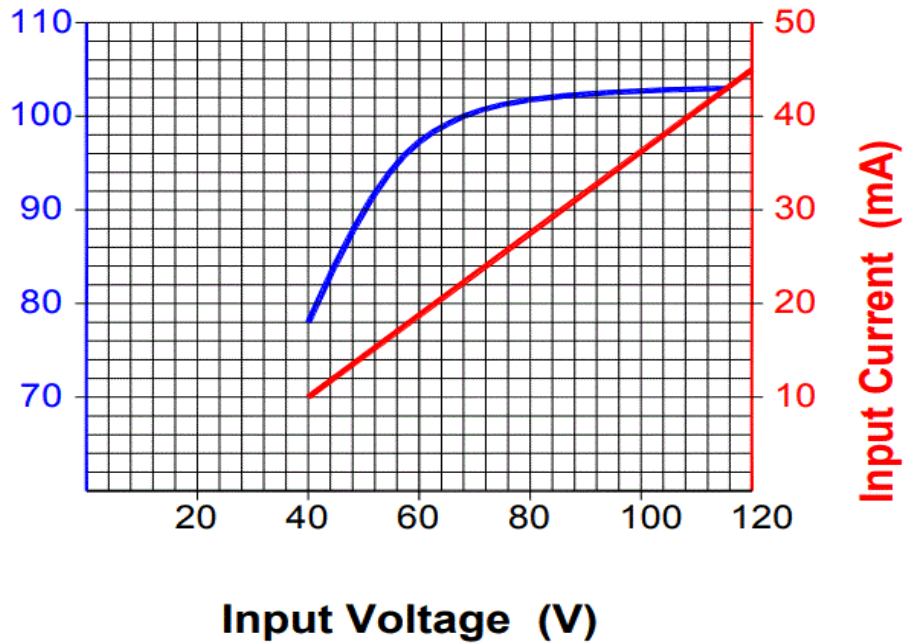
ELECTRICAL

Rated Voltage	117 VAC
Operating Voltage	40 to 120 VAC
Max Current at Vmax	50 mA

ACOUSTIC

Tone Category	Continuous
Description	Steady
Center <i>f</i>	2900 ± 500 Hz
Min SPL at Vmin	83 dB
Min SPL at Vmax	98 dB
Test Conditions	61 cm

Typical Output Sound Level ± 4 dB(A), with Type 2 Meter



Physical Characteristics

MATERIALS

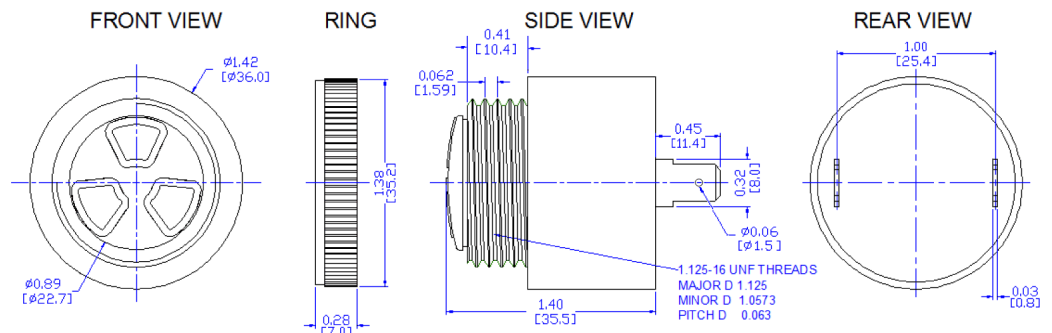
Housing	Noryl PX9406
Diaphragm	Stainless Steel
Terminal	Electro-Tin Plated Brass

TEMPERATURE RANGES

Operating	-30 to +65 °C
Storage	-40 to +105 °C

Weight 35 g

Units: In. [mm] Tolerance: +/- 0.03 [0.7] unless otherwise stated



All Measurements are mm unless noted otherwise.

Revision	Description	By	Date
7-2019	Migrate to new format.	YK	2019-06-21
8-2020	Added units to mechanical drawing. Updated SPL at Vmin to Minimum 83 dB and SPL at Vmax to Minimum 98 dB.	JL	2020-08-03

Warranty: For a period of two (2) years from date of shipping under normal operations conditions This warranty does not apply to products damaged through misuse, abuse, improper installation, alteration, rework, or attempt to repair.

The information contained herein is believed to be correct, but no guarantee or warranty, express or implied, with respect to accuracy, completeness or results is extended and no liability is assumed. Challenge Electronics reserves the right to make changes in any specification, data or material contained herein.