

INDICATORS • SPEAKERS • SOUND TRANSDUCERS • ENCLOSURES • MICROPHONES • BATTERY ACCESSORIES

## CI25P-18W290-C-2

Former P/N: CE-C75W

Rev. 7-2019  
RoHS3 & REACH  
Piezoelectric Indicators



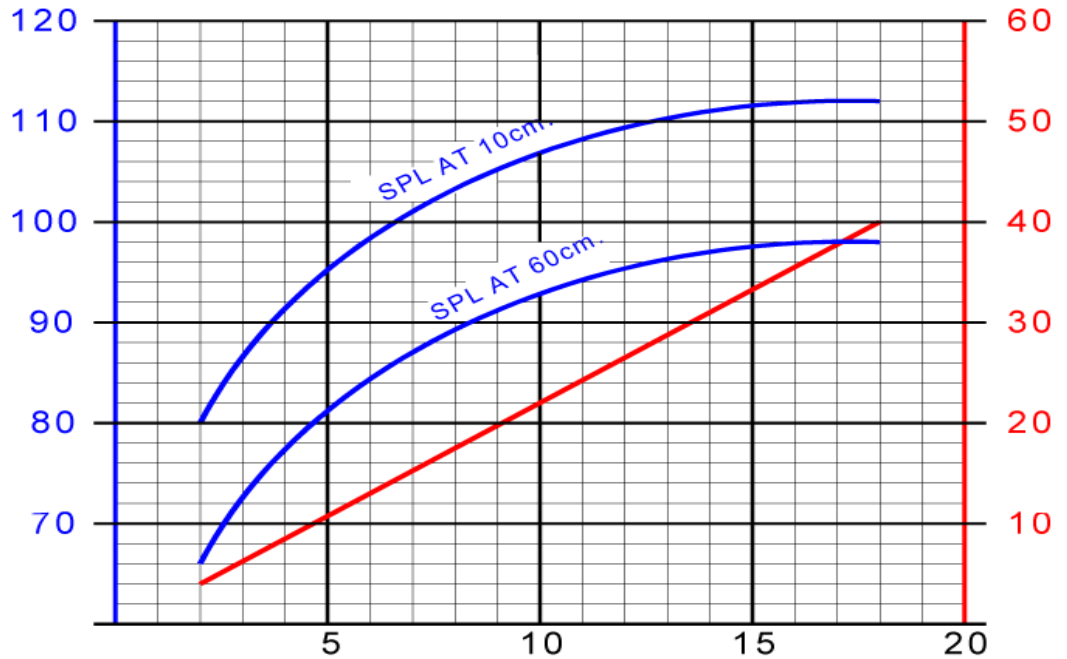
### Operating Characteristics

#### ELECTRICAL

Rated Voltage	12.0 VDC
Operating Voltage	3.0 to 18.0 VDC
Max Current at Vmax	40 mA

#### ACOUSTIC

Tone Category	Continuous
Description	Steady
Center <i>f</i>	3000 ± 500 Hz
Min SPL at Vrated	92 dB
Test Conditions	61 cm



### Physical Characteristics

#### MATERIALS

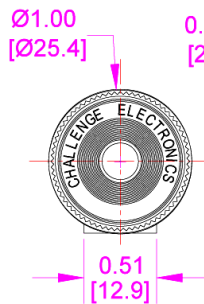
Housing	Plastic
Diaphragm	Stainless Steel
Wire	20AWG, UL1007, Copper

#### TEMPERATURE RANGES

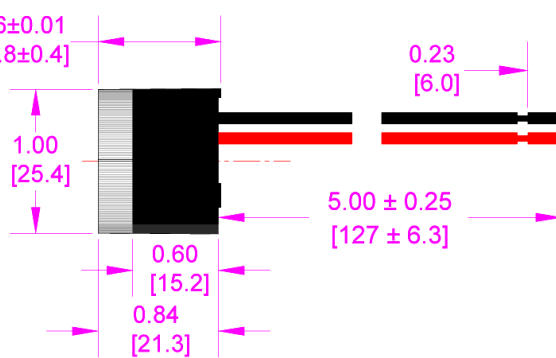
Operating	-30 to +65 °C
Storage	-40 to +85 °C

Weight	20 g
--------	------

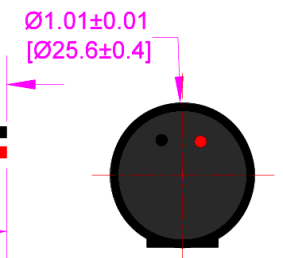
#### FRONT VIEW



#### SIDE VIEW



#### REAR VIEW



Revision	Description	By	Date
6-2018	Updated termination wires from 18AWG to 20 AWG.	JL	2018-08-21
7-2019	Migrate to new format	JL	2019-09-12

Warranty: For a period of one (1) year from date of shipping under normal operations conditions This warranty does not apply to products damaged through misuse, abuse, improper installation, alteration, rework, or attempt to repair.

The information contained herein is believed to be correct, but no guarantee or warranty, express or implied, with respect to accuracy, completeness or results is extended and no liability is assumed. Challenge Electronics reserves the right to make changes in any specification, data or material contained herein.