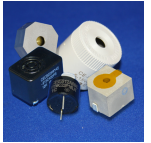


CI12P-05S410-C-1

Rev. 0-2026
RoHS3 & REACH
Piezoelectric Indicators


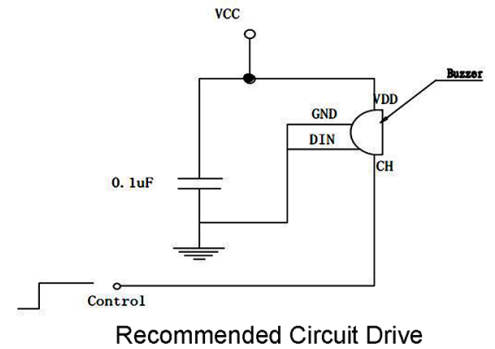
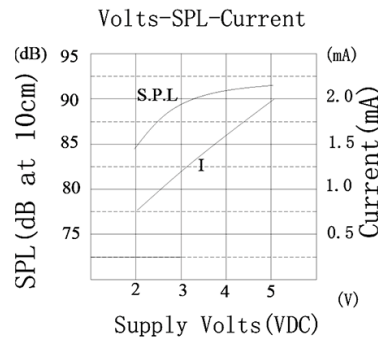
Operating Characteristics

ELECTRICAL

Rated Voltage	3 VDC
Operating Voltage	2 to 5.5 VDC
Max Current at Vrated	5 mA

ACOUSTIC

Tone Category	Continuous
Description	Steady
Center <i>f</i>	4,100 Hz ± 2 %
Min SPL at Vrated	85 dB
SPL Test Conditions	10 cm



Physical Characteristics

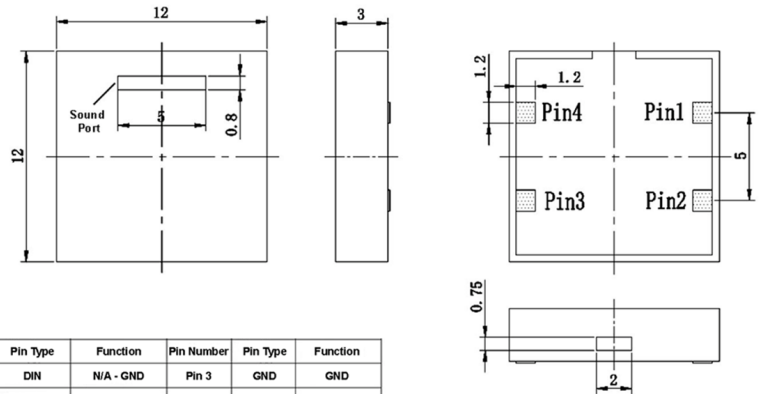
MATERIALS

Housing	LCP
Diaphragm	Nickel
Solder Pad	Brass (DSn)

TEMPERATURE RANGES

Operating	-40 to +85 °C
Storage	-40 to +85 °C

Weight 2 g



Pin Number	Pin Type	Function	Pin Number	Pin Type	Function
Pin 1	DIN	N/A - GND	Pin 3	GND	GND
Pin 2	VDD	Input Power	Pin 4	CH	Control

CH (Control) Pulled High for Continuous Output and Low for No Output. Pulse CH for Pulsating Tone

General tolerance = ±0.3 mm and all measurements in mm unless otherwise noted.

Revision	Description	By	Date
0-2026	Original Specification	KG	2026-01-05

Warranty: For a period of one (1) year from date of shipping under normal operations conditions. This warranty does not apply to products damaged through misuse, abuse, improper installation, alteration, rework, or attempt to repair.

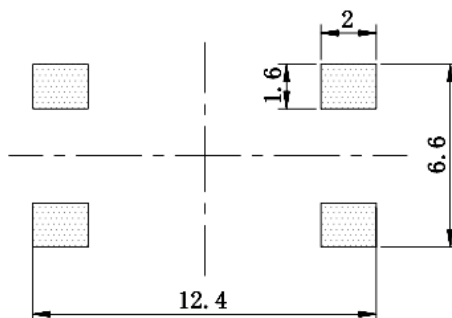
The information contained herein is believed to be correct, but no guarantee or warranty, express or implied, with respect to accuracy, completeness or results is extended and no liability is assumed. Challenge Electronics reserves the right to make changes in any specification, data or material contained herein.

CI12P-05S410-C-1

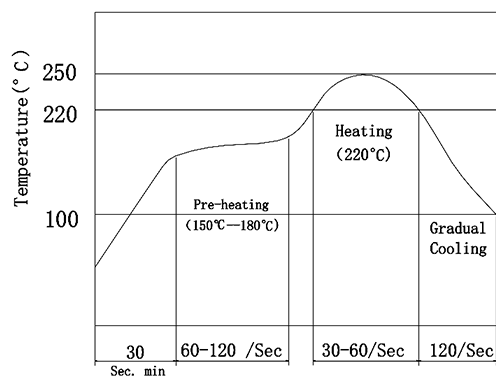
Rev. 0-2026
RoHS3 & REACH
Piezoelectric Indicators


Recommended Footprint

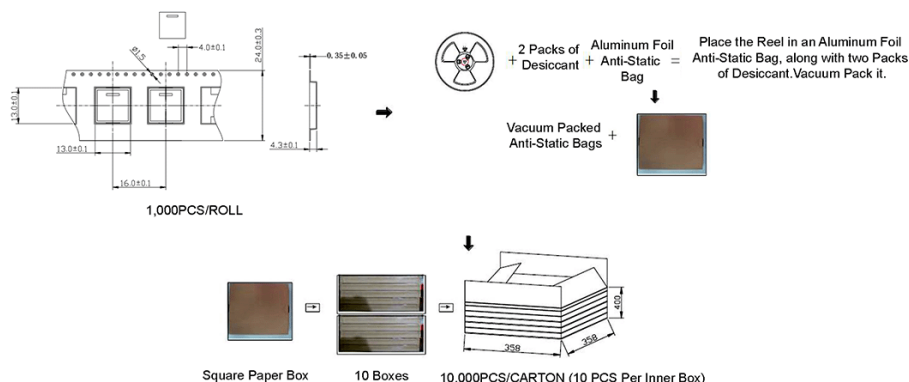
SMD REFLOW PATTERN



Recommended Reflow Profile



Tape & Reel Packaging



Revision	Description	By	Date
0-2026	Original Specification	KG	2026-01-05

Warranty: For a period of one (1) year from date of shipping under normal operations conditions. This warranty does not apply to products damaged through misuse, abuse, improper installation, alteration, rework, or attempt to repair.

The information contained herein is believed to be correct, but no guarantee or warranty, express or implied, with respect to accuracy, completeness or results is extended and no liability is assumed. Challenge Electronics reserves the right to make changes in any specification, data or material contained herein.