

INDICATORS • SPEAKERS • SOUND TRANSDUCERS • ENCLOSURES • MICROPHONES • BATTERY ACCESSORIES

## CAB21LF-01T-1

Former P/N: BC-2002

Rev. 0-2020  
RoHS3 & REACH  
Battery Assembly



### Physical Characteristics

#### MATERIALS

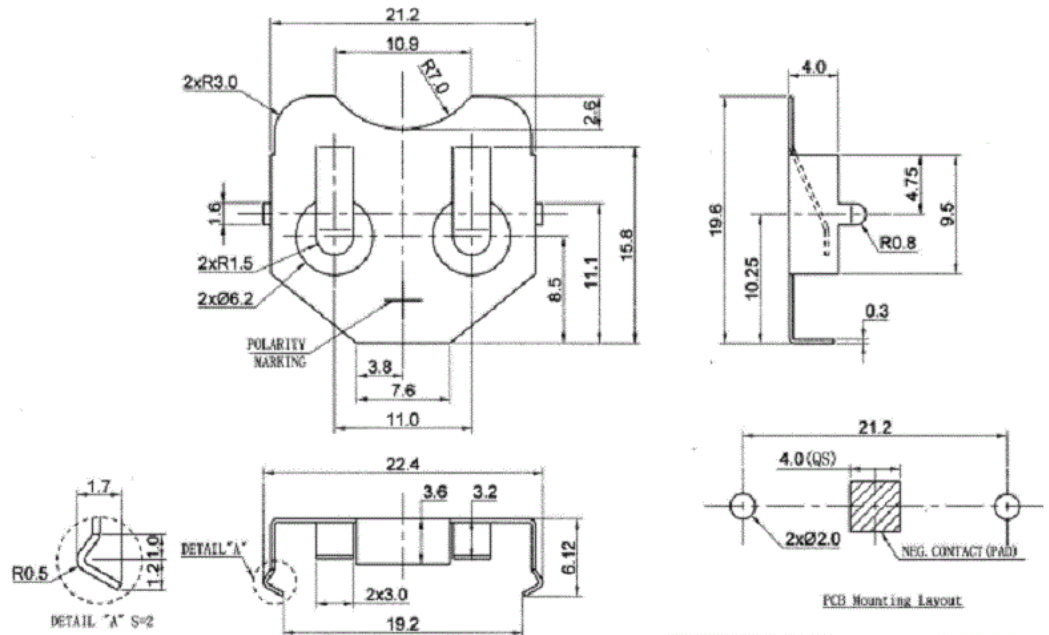
Contact Phosphor Bronze with Nickel Plating

#### TEMPERATURE RANGES

Operating -30 to +60 °C

Storage -40 to +95 °C

Cell Type CR2032, or equivalent



| Revision | Description       | By | Date       |
|----------|-------------------|----|------------|
| 0-2020   | new specification | WS | 2020-03-19 |

Warranty: For a period of one (1) year from date of shipping under normal operations conditions This warranty does not apply to products damaged through misuse, abuse, improper installation, alteration, rework, or attempt to repair.

The information contained herein is believed to be correct, but no guarantee or warranty, express or implied, with respect to accuracy, completeness or results is extended and no liability is assumed. Challenge Electronics reserves the right to make changes in any specification, data or material contained herein.  
©2020 Challenge Electronics, Inc. Pub. 20200319110819